

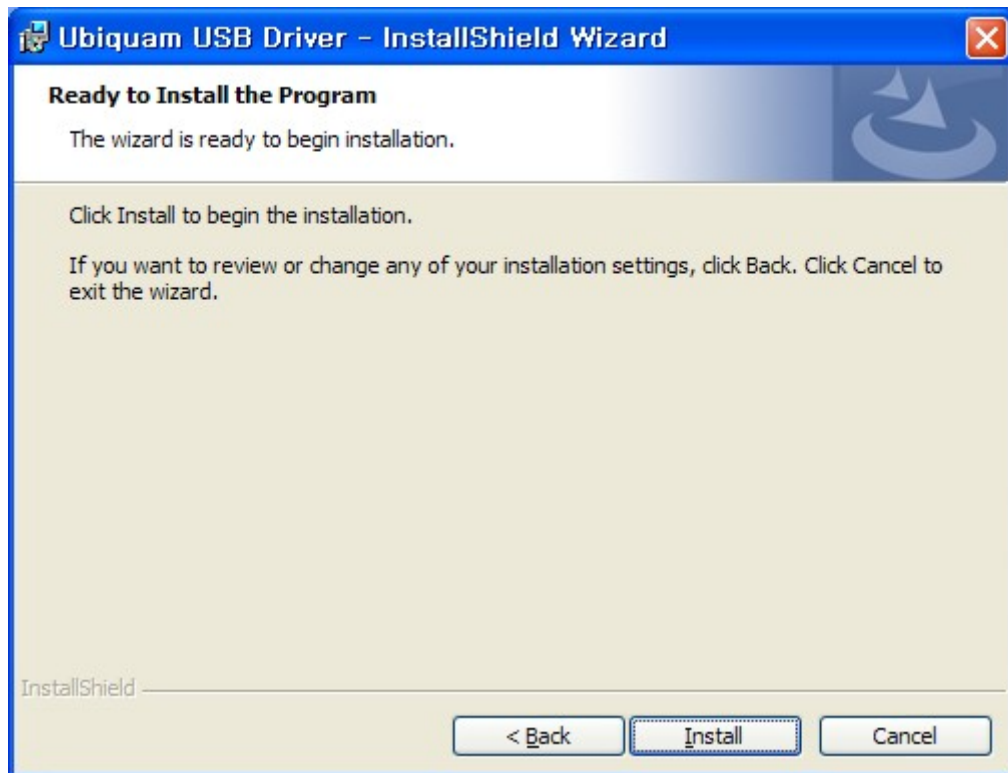
1. Ubiquam USB driver Install Process – Windows XP

1.1. Install new Ubiquam USB driver.

※ If you had installed a previous version of ubiquam driver, please uninstall it first before you install a new version.

1.2. Execute the "Ubiquam USB Driver" and click "Install" button.





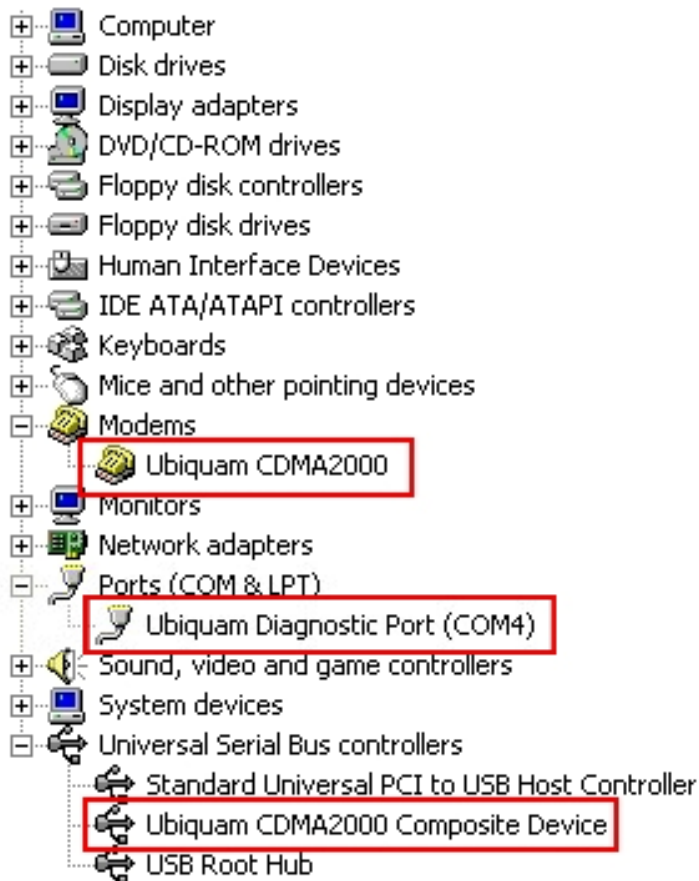
1.3. Please wait until installation is complete.



1.4. Connect Ubiquam CDMA phone to computer with USB cable.

You can see the " Found New hardware " message in Windows Taskbar that it has found three types of different drivers in a row ; Ubiquam CDMA2000 Composite Device, Ubiquam CDMA2000 and Ubiquam Diagnostic port.

1.5 To check if the installation has been successfully completed, you may access **Start, Control Panel, System, Hardware, Device Manager**, and check if the following components are displayed:



1. Ubiquam CDMA2000

2. Ubiquam Diagnostic Port

3. Ubiquam CDMA2000 Composite Device

2. Access to Internet (Data Service)

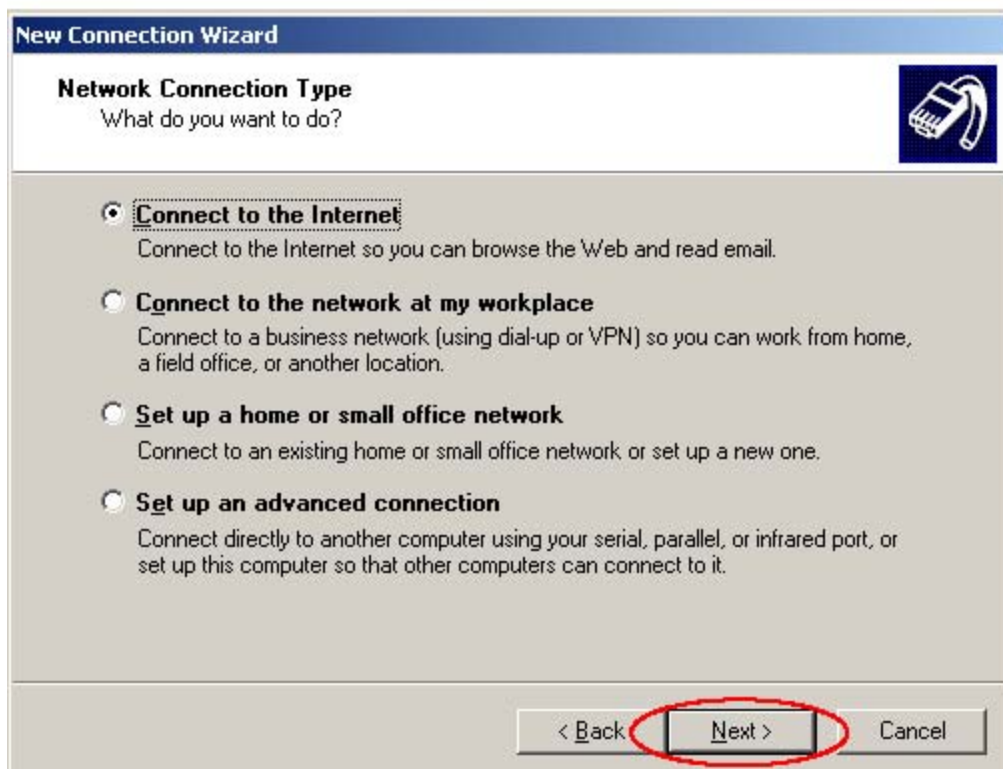
2.1 Connect Ubiquam CDMA phone to computer with USB cable.

2.2. "Start" → "Control Panel" → "Network Connection" → "Make New Connection"

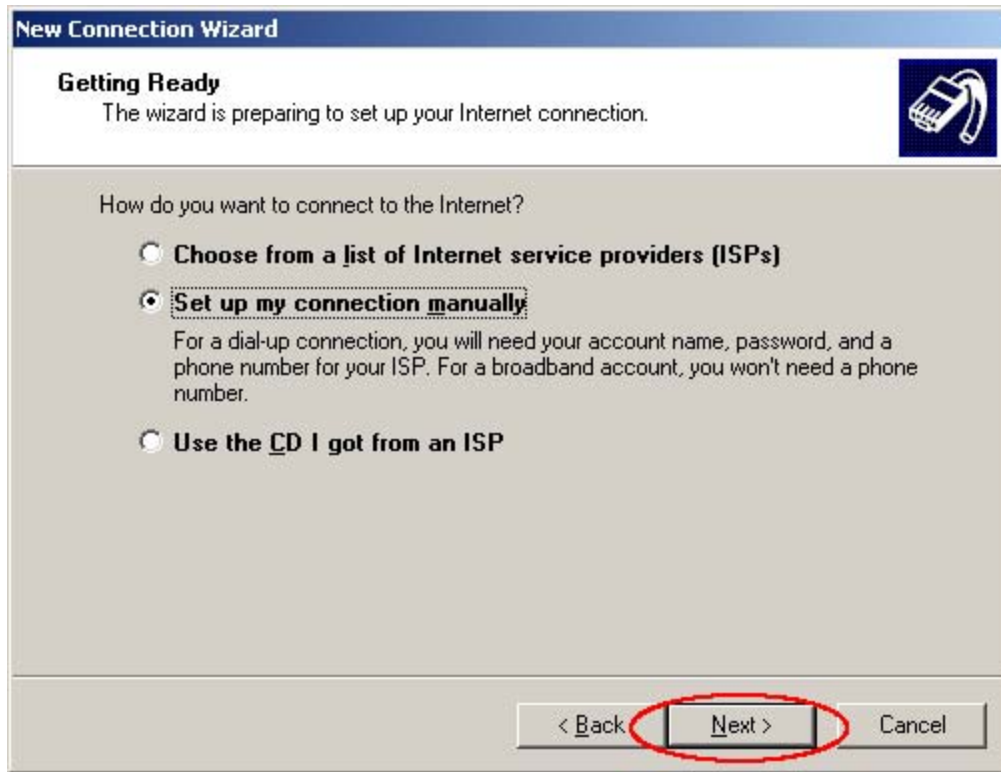
2.3. Click "Next"



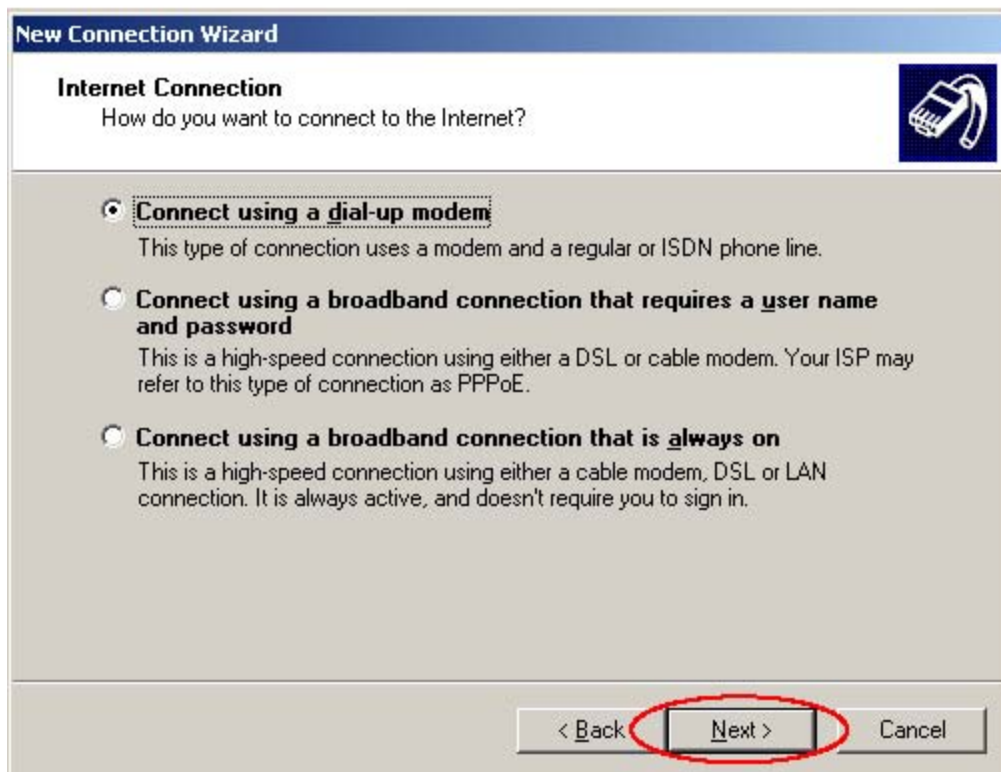
2.4. Click "Connect to the Internet"



2.5. Click "Set up my connection manually"

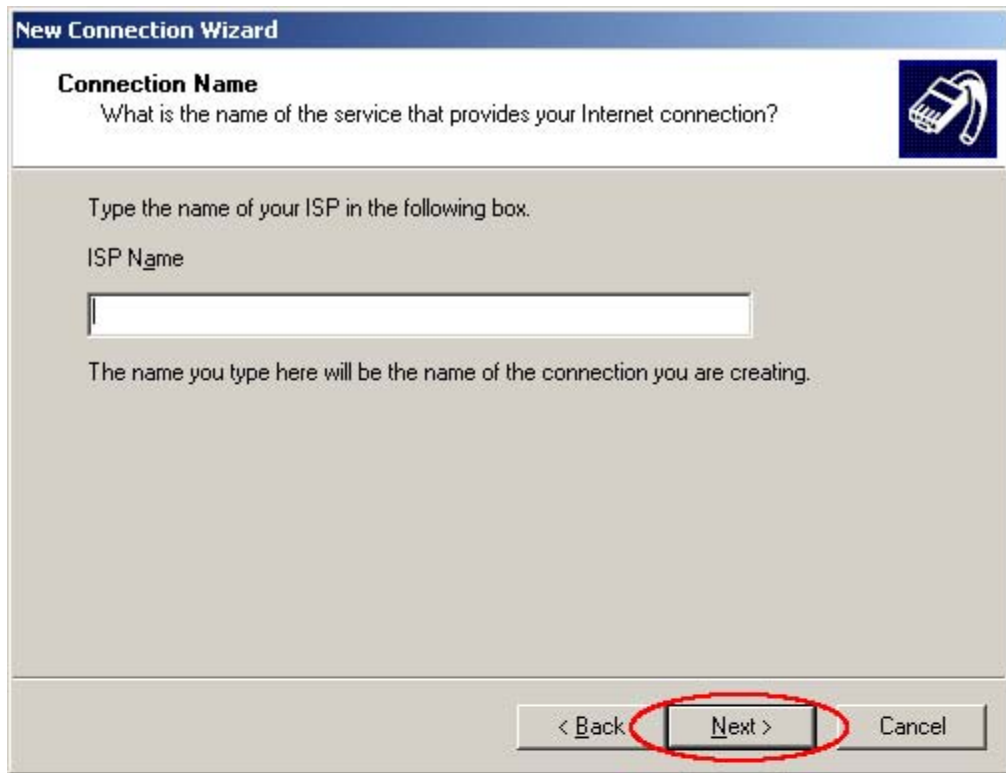


2.6. Click "Connect using a dial-up modem"



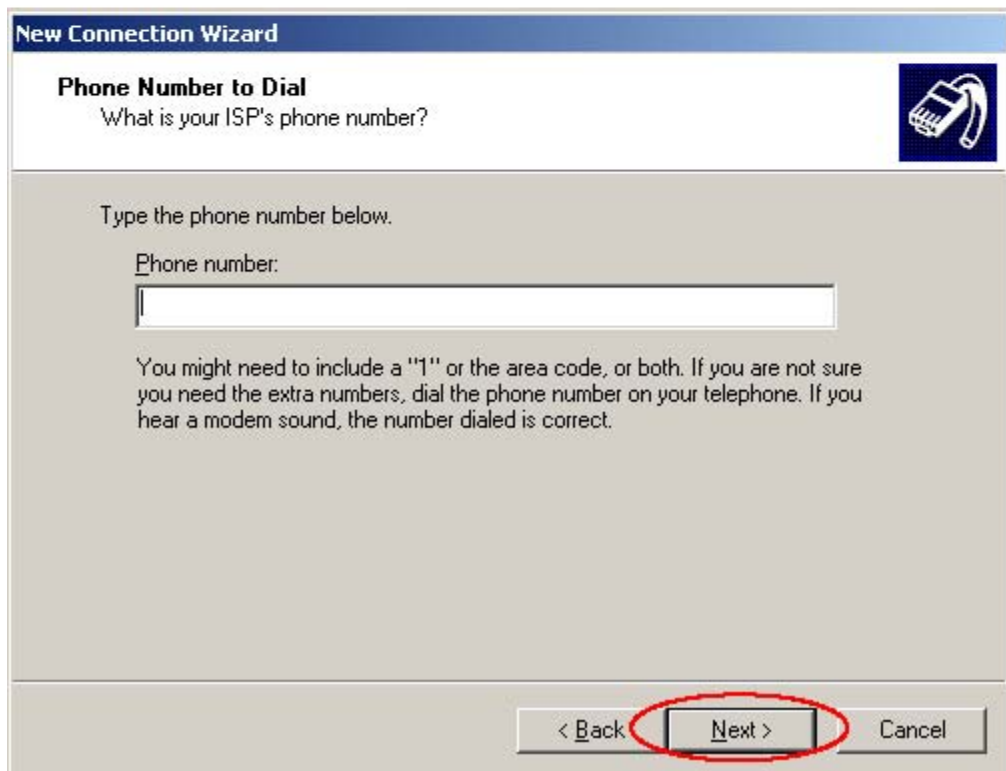
2.7. Select modem of Ubiquam CDMA 2000, if the PC has more than two modems.

2.8. Click "Next"



The screenshot shows the 'New Connection Wizard' dialog box. The title bar reads 'New Connection Wizard'. The main heading is 'Connection Name' with a sub-question: 'What is the name of the service that provides your Internet connection?'. To the right is a blue icon of a modem. Below the heading, it says 'Type the name of your ISP in the following box.' followed by 'ISP Name' and an empty text input field. A note below the field states: 'The name you type here will be the name of the connection you are creating.' At the bottom, there are three buttons: '< Back', 'Next >', and 'Cancel'. The 'Next >' button is circled in red.

2.9. Put in "#777" in "Phone number" then click "Next"



The screenshot shows the 'New Connection Wizard' dialog box. The title bar reads 'New Connection Wizard'. The main heading is 'Phone Number to Dial' with a sub-question: 'What is your ISP's phone number?'. To the right is a blue icon of a modem. Below the heading, it says 'Type the phone number below.' followed by 'Phone number:' and an empty text input field. A note below the field states: 'You might need to include a "1" or the area code, or both. If you are not sure you need the extra numbers, dial the phone number on your telephone. If you hear a modem sound, the number dialed is correct.' At the bottom, there are three buttons: '< Back', 'Next >', and 'Cancel'. The 'Next >' button is circled in red.

2.10. Click "Next"



New Connection Wizard

Internet Account Information
You will need an account name and password to sign in to your Internet account.

Type an ISP account name and password, then write down this information and store it in a safe place. (If you have forgotten an existing account name or password, contact your ISP.)

User name:

Password:

Confirm password:

Use this account name and password when anyone connects to the Internet from this computer

Make this the default Internet connection

< Back **Next >** Cancel

2.11. Click "Finish"



New Connection Wizard

Completing the New Connection Wizard

You have successfully completed the steps needed to create the following connection:

Dial-up Connection 2

- Make this the default connection
- Share with all users of this computer
- Use the same user name & password for everyone

The connection will be saved in the Network Connections folder.

Add a shortcut to this connection to my desktop

To create the connection and close this wizard, click Finish.

< Back **Finish** Cancel

2.12. Input "User name", "Password", and "Dial" and then Click "Dial"

(You can ask your service provider about "User name", "Password", and "Dial")

